

Tighten your Safety Knot

**Know Safety, No Injury
No Safety, Know Injury**



PREFACE

SG Exports was incorporated in 2003 by professionally qualified person for manufacturing industrial safety footwear and rain boots. We are having ultra modern factories in Greater Noida, Delhi – NCR having an installed capacity to manufacture two million safety footwears of PU/PVC/Nitrile Rubber and five hundred fifty thousand pairs of PVC rainboots annually.

We are a leading manufacturer of the said products in Indian market. We are also having substantial footprint in middle eastern markets mainly UAE / Kuwait / Saudi Arabia and Europe / Africa.

All our products are having required test certificate confirming to Indian as well as European norms and are made under very strict quality control measures. The footwear is also tested in our in-house testing facilities.

Our business philosophy is

“complete customer satisfaction”



CE Certificate (European Standards)



MIRTA-KONTROL d.o.o.

PJ CERTIFIKACIJA PROIZVODA
PRODUCT CERTIFICATION DEPARTMENT

Prijavljeno tijelo broj 2474
Notified Body No. 2474

Gradiška 3, HR-10040 Zagreb – Dubrava, Hrvatska
tel.: +385 (0)1 24 31 346 / fax.: +385 (0)1 24 31 347
e-mail: cert@mirta-kontrol.hr / www.mirta-kontrol.hr

CP-RN 518/19

EU pregled tipa proveden je sukladno Uredbi (EU) 2016/425, Prilog V o osobnoj zaštitnoj opremi (OZO)
EU type-examination is conducted acc. to Regulation (EU) 2016/425, Annex V on personal protective equipment (PPE)

EU CERTIFIKAT O PREGLEDU TIPAA EU TYPE-EXAMINATION CERTIFICATE

OZO377-CPT002/19

Proizvođač: Manufacturer:	S G EXPORTS D-1, D-195, D-196, D-197, EPIP Site-V Kasna, Greater Noida - 201306, Uttar Pradesh India
Kategorija i vrsta OZO: Category and PPE Type:	OZO kategorije II, sigurnosna obuća PPE category II, safety footwear
Artikl, tip ili model: Article, type or model:	VAULTEX - SGE, VAULTEX - SGM, VAULTEX - SGN, ZALAT - ZAK, VAULTEX - SGB, VAULTEX - SGH, VAULTEX - SGK
Usklađena norma: Harmonized standard:	HRN EN ISO 20345:2012 (EN ISO 20345:2011) Osobna zaštitna oprema – Sigurnosna obuća Personal protective equipment – Safety footwear
Razred: Class:	I obuća napravljena od kože i drugih materijala, isključujući potpuno gumeni ili potpuno polimernu obuću footwear made from leather and other materials, excluding all-rubber or all-polymeric footwear
Dizajn – tip: Design – type:	A cipela low shoe B gležnjača ankle boot
Simboli zaštite / kategorije: Symbols / Category:	S3 zadovoljeni svi osnovni normativni zahtjevi, uz dodatke: zatvoreni lab, antistatička svojstva (A), apsorpcija energije u područja pete (E), otpornost potplata na pogonsko gorivo (FO), propaljanje i upijanje vode gornjišta (WRU), otpornost na probijanje (P), potplat s profilima complies with all basic standard requirements and additional: closed seam region, antistatic properties (A), energy absorption of heel region (E), outsole resistance to fuel oil (FO), upper water penetration and absorption (WRU), penetration resistance (P), cleated outsole SRA otpornost na klizanje slip resistance
Dokumenti o pregledu: Examination documents:	Tehnička dokumentacija / Technical documentation VAULTEX-SGx S3, rev1 Izveštaj o ocjenjivanju br. / Evaluation Report No. OZO377-R002/19



ISO Certificate



Certificate of Registration

Certificate No: 180910019107

This is to Certify that the Quality Management System of

S. G. EXPORTS

D1 & D 195, EPIP SITE -V, KASNA, GREATER NOIDA,
GAUTAM BUDDH NAGAR - 201306, UTTAR PRADESH, INDIA

has been assessed and found to be in accordance with the requirements of
standard detailed below

ISO 9001:2015

This Certificate is valid for the following scope

“MANUFACTURING AND SUPPLY OF SAFETY SHOES”

(IAF Group- 05)

UAF is full member of International Accreditation Forum (IAF),
to check validity of this certificate please visit www.isoindia.org



United Accreditation Foundation
3518, Colmar, Norfolk, VA 23509,
United States of America



Pragvish Singh, CEO
TNV Certification Pvt Ltd
CIN: U74900UP2011PTC046719
Accredited by United Accreditation
Foundation (UAF)

H.O.: TNV House, 33-B/18-B, Amber Vikas, Lucknow-20 India, Ph: +91-522-2756327-28, Mail: info@tnvindia.org

*Validity of this certificate is subject to continued compliance of the management system demanded and successful completion of audit as planned by TNV from time to time. Further clarification regarding the scope of this certificate and the applicability of standard may be obtained by consulting the organization. This certificate remains property of the TNV and must be returned on request. For surveillance details, please visit at www.isoindia.org. Registered Office of the TNV in TNV House, B-11/19/09, Sector 4, Aligarh, Lucknow-20, UP, India.



Export House Certificate



सत्यमेव जयते

भारत सरकार
GOVERNMENT OF INDIA

वाणिज्य एवं उद्योग मंत्रालय
MINISTRY OF COMMERCE & INDUSTRY
कार्यालय, अपर महानिदेशक, विदेश व्यापार

OFFICE OF THE ADDITIONAL DIRECTOR GENERAL OF FOREIGN TRADE

मान्यता प्रमाण पत्र
Certificate of Recognition

निर्यात सदन
EXPORT HOUSE

मैसर्स _____

(आई ई सी सं. _____ और आयकर पैन सं. _____)
को विदेश व्यापार नीति, 2009-2014 के प्रावधानों के अनुसार निर्यात सदन का
स्तर प्रदान किया जाता है। यह प्रमाण पत्र 1 अप्रैल _____ से 31 मार्च _____
तक _____ वर्षों की अवधि के लिए वैध है।

M/s. SGS SECURITY PVT. LTD., B-704, PARASHWATI APARTMENTS, PLOT NO. 97,
I.P. EXTN. DELHI-92

(IEC No. 0508017556 and Income Tax PAN
No. AAAG7958F) are hereby accorded the status of Export

House in accordance with the provisions of the Foreign Trade Policy,
2009-2014. This Certificate is valid for a period of XXXXXXXXXX Years,
effective from 1st April 2014 To 31st March 2015. THIS CERTIFICATE SHALL
REMAIN VALID FOR A PERIOD CO-TERMINUS WITH THE EXISTING FTP AND ITS
EXTENSION THEREOF, TILL THE TIME NEW FTP 2014-19 COMES INTO FORCE."

सं./No. AA/ 1821

तारीख/Date : 14.10.2014

स्थान/Place : NEW DELHI



(SUMEET JERATH)

अपर महानिदेशक, विदेश व्यापार
Additional Director General
of Foreign Trade

(फाईल सं./File No.) 05/75/105/390/AM15/EHC/CLA/



BIS Certificate (Indian Standards)



भारतीय मानक ब्यूरो
BUREAU OF INDIAN STANDARDS

Ghaziabad Branch Office

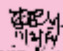
Address: Central Laboratory (Chemical Lab Block)
Ground & 1st Floor, Plot No. 20/9, Site-
IV, Sahibabad Industrial Area,
Sahibabad,
Ghaziabad-201 010

E-Mail: gzco@bis.org.in
web : <http://www.bis.org.in>

Attachment to Licence No. CML- 8700002012

CML-No	Name of the Licensee with the Factory Address	Name of the Product	Indian Standard No.
8700002012	S.G. EXPORTS D-1, F.P.I.P, INDI, KASNA, Grazer Noida Uttar Pradesh 201306	Personal protective Equipment Part 2: Safety Footwear	IS 15298:Part 2:2016

Endorsement No. 04 Dated 11 FEB 2019


(Jr. Kavin Keerthy Vinayagam)
Scientist 'B'



BIS Certificate (Indian Standards)





BIS Certificate (Indian Standards)



भारतीय मानक ब्यूरो
BUREAU OF INDIAN STANDARDS

Ghaziabad Branch Office

Central Laboratory, Chemical Lab
Block 1 Ground & 1st Floor, Plot No
20/9, Site V, Subroad, Post to
Area, Seelampur, Delhi-110010

Phones : 0120-277 090, 277 091

Tel. 0120-277 099, 277 099

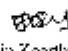
Fax 0120-277 099

Web <http://www.bis.org.in>

ATTACHMENT TO LICENCE NO. CML- 2997576

CML NO	NAME OF THE LICENSEE WITH ADDRESS	PRODUCT	IS NO
2997576	M/S S.S. Exports D-1, Site V, CHEM, UPSID, Indl. Area, Seelampur, Distt. Ghaziabad, Nagar Uttar Pradesh	Plasticized Chloride (pvc) industrial boots-Knee boots for men's except cold flex	IS 1229-1992







ENDORSEMENT NO. 6 Dated 27 Oct 2019


(/s/ Kavin Koorby Vinaygand)
SCIENTIST B

TECHNICAL INFORMATION

European Standards Footwear Classification

- SB** Safety Basic to 200 joules toe protection
- S1** Safety Basic Antistatic and energy absorbing heel
- S2** Safety Basic Antistatic, energy absorbing heel and water resistant upper.
- S3** Safety Basic Antistatic, energy absorbing heel and water resistant upper and steel midsole.
- S4** Safety Basic 100% waterproof upper.
- S5** Safety Basic 100% waterproof upper with steel midsole.
- P1** Protective Basic to En346 100 joules toe protection.

P1	Protective Basic and Antistatic.
	Antistatic.
DD	Dual Density
	Steel Midsole
	Non-metal composite midsole
	Waterproof
	Oil Resistant
	Protective Steel Toe



- COMFORT BREATHABLE FABRIC
- COMFORT FOAM TO PROTECT ANKLE BONE
- COMFORT & ANTI-STATIC CUSHION INSOLE
- LEATHER UPPER
- COMFORT FABRIC MESH
- BREATHABLE LINING
- COMPOSITE / STEEL TOE CAP

METAL / NON METAL MIDSOLE

HIGH ABRASION RESISTANT, ANTI-SLIP OUTSOLE



VAULTEX STELLAR AK



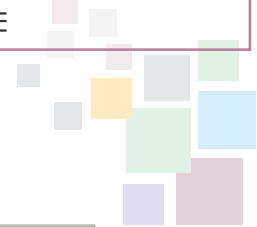
ANTISTATIC



DOUBLE DENSITY



TYPE	: MID ANKLE
UPPER	: BUFF PRINTED LEATHER
OUTSOLE	: PU DIRECT MOULDED DOUBLE DENSITY
LINING	: PADDED SYNTHETIC
TOE	: 200 JOULE (STEEL)
SIZES	: 4/38 TO 13/47
COLOUR	: BLACK
OPTIONAL	: STEEL MID PLATE / ELECTRICAL
APPROVAL	: ISI / CE



VAULTEX STELLAR



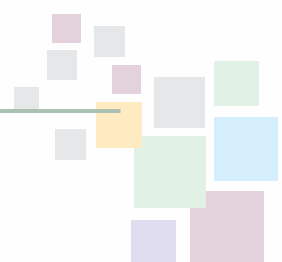
ANTISTATIC



DOUBLE DENSITY



TYPE	: DERBY, 4 EYELETS
UPPER	: BUFF PRINTED LEATHER
OUTSOLE	: PU DIRECT INJECTION SOLE, DOUBLE DENSITY
LINING	: PADDED SYNTHETIC
TOE	: 200 JOULE (STEEL)
SIZES	: 4/38 TO 13/47
COLOUR	: BLACK
OPTIONAL	: STEEL MID PLATE / ELECTRICAL
APPROVAL	: ISI / CE





VAULTEX FUSION



ANTISTATIC



TYPE	: LOW ANKLE, 4 EYELETS
UPPER	: BUFF GRAIN ALBAMA PRINT
OUTSOLE	: SINGLE DENSITY PU ANTISTATIC
LINING	: PADDED SYNTHETIC
TOE	: 200 JOULE (STEEL)
SIZES	: 4/38 TO 13/47
COLOUR	: BLACK
OPTIONAL	: DOUBLE DENSITY / STEEL MID PLATE / ELECTRICAL
APPROVAL	: ISI / CE

VAULTEX ICON



TYPE	: LOW ANKLE, 4 EYELETS
UPPER	: BUFF GRAIN PRINTED LEATHER
OUTSOLE	: PU DIRECT MOULDED SINGLE DENSITY
LINING	: PADDED SYNTHETIC
TOE	: 200 JOULE (STEEL)
SIZES	: 4/38 TO 13/47
COLOUR	: BLACK
OPTIONAL	: DOUBLE DENSITY / STEEL MID PLATE / ANTISTATIC
APPROVAL	: ISI / CE



VAULTEX BOXER



ANTISTATIC



DOUBLE DENSITY



TYPE	: DERBY
UPPER	: BUFF SUEDE
OUTSOLE	: PU DIRECT MOULDED DOUBLE DENSITY
LINING	: PADDED SYNTHETIC
TOE	: 200 JOULE (STEEL)
SIZES	: 4/38 TO 13/47
COLOUR	: GREY
OPTIONAL	: STEEL MID PLATE / ELECTRICAL
APPROVAL	: ISI/CE



VAULTEX KPU



ANTISTATIC



TYPE	: DERBY
UPPER	: KPU+FABRIC
OUTSOLE	: PU DIRECTLY MOULDED SINGLE DENSITY
LINING	: PADDED SYNTHETIC
TOE	: 200 JOULE (STEEL)
SIZES	: 4/38 TO 13/47
COLOUR	: RED-BLACK
OPTIONAL	: STEEL MID PLATE/ ELECTRICAL
APPROVAL	: ISI / CE



With Shock Absorber at Heel



VAULTEX PRO



TYPE	: DERBY, 4 EYELETS
UPPER	: BUFF GRAIN PRINTED LEATHER
OUTSOLE	: PU DIRECT MOULDED SINGLE DENSITY
LINING	: PADDED SYNTHETIC
TOE	: ALLOY STEEL
SIZES	: 4/38 TO 13/47
COLOUR	: BLACK
OPTIONAL	: ISI / ANTISTATIC / ELECTRICAL
APPROVAL	: ISI / CE

VAULTEX LITE



TYPE	: DERBY, 4 EYELETS
UPPER	: FULL GRAIN LEATHER WITH PADDED COLLAR
OUTSOLE	: PU DIRECTLY MOULDED SOLE
LINING	: PADDED SYNTHETIC
TOE	: ALLOY STEEL
SIZES	: 4/38 TO 13/47
COLOUR	: BLACK
OPTIONAL	: STEEL MID PLATE /ANTISTATIC / NMT
APPROVAL	: ISI / CE



VAULTEX EVES

CE



TYPE	: SLIP ON
UPPER	: BUFF PRINTED LEATHER
OUTSOLE	: PU DIRECTLY MOULDED SINGLE DENSITY
LINING	: PADDED SYNTHETIC
TOE	: ALLOY STEEL
SIZES	: 4/38 TO 13/47
COLOUR	: BLACK
OPTIONAL	: ANTISTATIC / ELECTRICAL / STEEL MID PLATE
APPROVAL	: CE

MILLER EX.

CE



TYPE	: DERBY, 3 EYELETS
UPPER	: BUFF GRAIN LEATHER
OUTSOLE	: PU DIRECTLY MOULDED SINGLE DENSITY
LINING	: PADDED SYNTHETIC
TOE	: ALLOY STEEL
SIZES	: 4/38 TO 13/47
COLOUR	: BLACK
OPTIONAL	: ANTISTATIC / ELECTRICAL / STEEL MID PLATE
APPROVAL	: CE



VAULTEX HR 300



300°C



TYPE	: DERBY, 3 EYELETS
UPPER	: BUFF GRAIN LEATHER
OUTSOLE	: NITRILE RUBBER MOULDED
LINING	: PADDED SYNTHETIC
TOE	: ALLOY STEEL
SIZES	: 4/38 TO 13/47
COLOUR	: BLACK
OPTIONAL	: ANTISTATIC / ELECTRICAL / STEEL MID PLATE
APPROVAL	: ISI / CE

VAULTEX MF 3030



ANTISTATIC



TYPE	: DERBY
UPPER	: MICROFIBRE SUEDE
OUTSOLE	: PU DIRECT MOULDED SINGLE DENSITY
LINING	: PADDED SYNTHETIC
TOE	: 200 JOULE (STEEL)
SIZES	: 4/38 TO 13/47
COLOUR	: BLACK
OPTIONAL	: ELECTRICAL / STEEL MID PLATE
APPROVAL	: ISI/CE



VAULTEX MF 1010



ANTISTATIC



TYPE	: DERBY
UPPER	: MICROFIBRE (WATER RESISTANT)
OUTSOLE	: PU DIRECT MOULDED SINGLE DENSITY
LINING	: PADDED SYNTHETIC
TOE	: 200 JOULE (STEEL)
SIZES	: 4/38 TO 13/47
COLOUR	: BLACK
OPTIONAL	: ELECTRICAL / STEEL MID PLATE
APPROVAL	: ISI/CE

VAULTEX MF 2020



ANTISTATIC



TYPE	: DERBY
UPPER	: MICROFIBRE (WATER RESISTANT)
OUTSOLE	: PU DIRECT MOULDED SINGLE DENSITY
LINING	: PADDED SYNTHETIC
TOE	: 200 JOULE (STEEL)
SIZES	: 4/38 TO 13/47
COLOUR	: BROWN
OPTIONAL	: ELECTRICAL / STEEL MID PLATE
APPROVAL	: ISI/CE



VAULTEX MF 4040



ANTISTATIC



TYPE	: SLIP ON
UPPER	: MICROFIBRE (WATER RESISTANT)
OUTSOLE	: PU DIRECT MOULDED SINGLE DENSITY
LINING	: PADDED SYNTHETIC
TOE	: 200 JOULE (STEEL)
SIZES	: 4/38 TO 13/47
COLOUR	: BLACK
OPTIONAL	: ELECTRICAL / STEEL MID PLATE
APPROVAL	: ISI/CE

VAULTEX MF 5050



ANTISTATIC



TYPE	: SLIP ON
UPPER	: MICROFIBRE (WATER RESISTANT)
OUTSOLE	: PU DIRECT MOULDED SINGLE DENSITY
LINING	: PADDED SYNTHETIC
TOE	: 200 JOULE (STEEL)
SIZES	: 4/38 TO 13/47
COLOUR	: BROWN
OPTIONAL	: ELECTRICAL / STEEL MID PLATE
APPROVAL	: ISI/CE



VAULTEX MFW 001



ANTISTATIC



ANTI BACTERIAL

TYPE	: SLIP ON
UPPER	: MICROFIBRE (WATER RESISTANT)
OUTSOLE	: PU DIRECTLY MOULDED SINGLE DENSITY
LINING	: PADDED SYNTHETIC
TOE	: 200 JOULE (STEEL)
SIZES	: 3/37 TO 13/47
COLOUR	: WHITE
OPTIONAL	: STEEL MID PLATE / DOUBLE DENSITY / ELECTRICAL
APPROVAL	: ISI/CE

VAULTEX MFW 002



ANTISTATIC



ANTI BACTERIAL

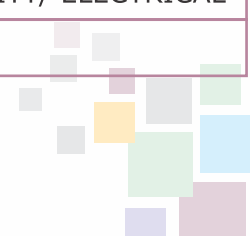
TYPE	: DERBY, 4 EYELETS
UPPER	: MICROFIBRE (WATER RESISTANT)
OUTSOLE	: PU DIRECTLY MOULDED SINGLE DENSITY
LINING	: PADDED SYNTHETIC
TOE	: 200 JOULE (STEEL)
SIZES	: 3/37 TO 13/47
COLOUR	: WHITE
OPTIONAL	: STEEL MID PLATE/ DOUBLE DENSITY/ELECTRICAL MID PLATE
APPROVAL	: ISI/CE



VAULTEX PUR AK



TYPE	: MID ANKLE
UPPER	: BUFF GRAIN LEATHER
OUTSOLE	: PU /NITRILE RUBBER SOLE
LINING	: PADDED SYNTHETIC
TOE	: 200 JOULE (STEEL)
SIZES	: 4/38 TO 13/47
COLOUR	: BLACK
OPTIONAL	: STEEL MID/ DOUBLE DENSITY/ ELECTRICAL
APPROVAL	: N/A



VAULTEX CHELSIA



ANTISTATIC



TYPE	: MID ANKLE
UPPER	: CRAZY UP LEATHER
OUTSOLE	: PU DIRECTLY MOULDED SINGLE DENSITY
LINING	: PADDED SYNTHETIC
TOE	: 200 JOULE (STEEL)
SIZES	: 4/38 TO 13/47
COLOUR	: TAN
OPTIONAL	: STEEL MID PLATE/ DOUBLE DENSITY/ ELECTRICAL
APPROVAL	: ISI/CE





VAULTEX OFFICER CHOICE (BLACK)



ANTISTATIC



TYPE	: SLIP ON
UPPER	: BUFF GRAIN ALBAMA PRINT
OUTSOLE	: PU DIRECTLY MOULDED SINGLE DENSITY
LINING	: PADDED SYNTHETIC
TOE	: ALLOY STEEL
SIZES	: 4/38 TO 13/47
COLOUR	: BLACK
OPTIONAL	: STEEL MID PLATE / ANTISTATIC / ELECTRICAL
APPROVAL	: ISI / CE

VAULTEX BOLT



TYPE	: DERBY, 4 EYELETS
UPPER	: BUFF GRAIN LEATHER
OUTSOLE	: PVC DIRECT INJECTION MOULDING
LINING	: PADDED SYNTHETIC
TOE	: ALLOY STEEL
SIZES	: 4/38 TO 13/47
COLOUR	: BLACK
OPTIONAL	: STEEL MID PLATE / DOUBLE DENSITY / ELECTRICAL
APPROVAL	: ISI/CE



VAULTEX VOLCANO



DOUBLE DENSITY



TYPE	: DERBY, 4 EYELETS
UPPER	: BUFF GRAIN LEATHER
OUTSOLE	: PU DIRECT INJECTION SOLE, DOUBLE DENSITY
LINING	: PADDED SYNTHETIC
TOE	: ALLOY STEEL
SIZES	: 4/38 TO 13/47
COLOUR	: BLACK
OPTIONAL	: ANTISTATIC/STEEL MID PLATE/ELECTRICAL
APPROVAL	: ISI/CE

VAULTEX VOLCANO AK



DOUBLE DENSITY



TYPE	: MID ANKLE
UPPER	: BUFF PRINTED LEATHER
OUTSOLE	: PU DIRECT MOULDED DOUBLE DENSITY
LINING	: PADDED SYNTHETIC
TOE	: ALLOY STEEL
SIZES	: 4/38 TO 13/47
COLOUR	: BLACK
OPTIONAL	: ANTISTATIC/STEEL MID PLATE/ELECTRICAL
APPROVAL	: ISI/CE



CONCORDE EX.

CE



TYPE	: LOW ANKLE, 3 EYELETS
UPPER	: BUFF GRAIN LEATHER
OUTSOLE	: PU DIRECTLY MOULDED SINGLE DENSITY
LINING	: PADDED SYNTHETIC
TOE	: ALLOY STEEL
SIZES	: 4/38 TO 13/47
COLOUR	: BLACK
OPTIONAL	: DOUBLE DENSITY / ANTISTATIC / ELECTRICAL / STEEL MID PLATE
APPROVAL	: CE

CONCORDE AK.

CE



TYPE	: HIGH ANKLE
UPPER	: BUFF GRAIN LEATHER
OUTSOLE	: PU DIRECTLY MOULDED SINGLE DENSITY
LINING	: PADDED SYNTHETIC
TOE	: ALLOY STEEL
SIZES	: 4/38 TO 13/47
COLOUR	: BLACK
OPTIONAL	: DOUBLE DENSITY / ANTISTATIC / ELECTRICAL / STEEL MID PLATE
APPROVAL	: CE



CONCORDE PRO

CE



TYPE	: DERBY, 3 EYELETS
UPPER	: BUFF GRAIN LEATHER
OUTSOLE	: PU DIRECTLY MOULDED SINGLE DENSITY
LINING	: PADDED SYNTHETIC
TOE	: ALLOY STEEL
SIZES	: 4/38 TO 13/47
COLOUR	: BLACK
OPTIONAL	: ANTISTATIC / ELECTRICAL / STEEL MID PLATE
APPROVAL	: CE

CONCORDE N 765

CE



TYPE	: DERBY, 4 EYELETS
UPPER	: BUFF GRAIN LEATHER
OUTSOLE	: PU DIRECTLY MOULDED SINGLE DENSITY
LINING	: PADDED SYNTHETIC
TOE	: ALLOY STEEL
SIZES	: 4/38 TO 13/47
COLOUR	: BLACK
OPTIONAL	: ANTISTATIC / ELECTRICAL / STEEL MID PLATE
APPROVAL	: CE



BLACK KNIGHT EX



NAIL PROOF



TYPE	: DERBY
UPPER	: BUFF GRAIN SMALL PRINT LEATHER
OUTSOLE	: PU DIRECTLY MOULDED SINGLE DENSITY
LINING	: PADDED SPENCER
TOE	: 200 JOULE (STEEL)
STEEL PLATE	: SPRING STEEL
SIZES	: 4/38 TO 13/47
COLOUR	: BLACK
OPTIONAL	: DOUBLE DENSITY / ANTISTATIC / ELECTRICAL
APPROVAL	: ISI / CE

BLACK KNIGHT AK



NAIL PROOF



TYPE	: MID ANKLE
UPPER	: BUFF GRAIN SMALL PRINT LEATHER
OUTSOLE	: PU DIRECTLY MOULDED SINGLE DENSITY
LINING	: PADDED SPENCER
TOE	: 200 JOULE (STEEL)
STEEL PLATE	: SPRING STEEL
SIZES	: 4/38 TO 13/47
COLOUR	: BLACK
OPTIONAL	: DOUBLE DENSITY / ANTISTATIC / ELECTRICAL
APPROVAL	: ISI / CE



VAULTEX GB 001



* Order minimum 5000 pairs for **glossy** boots.



TYPE	: KNEE LENGTH
UPPER	: MOULDED PVC
OUTSOLE	: DIRECT INJECTION PVC
LINING	: SYNTHETIC
TOE	: HIGH CARBON STEEL TOE
SIZES	: 4/38 TO 13/47
OPTIONAL	: STEEL MID PLATE / NMT
APPROVAL	: ISI / CE
COLOUR OPTION	: etc.

VAULTEX BIG BOSS



TYPE	: KNEE LENGTH
UPPER	: MOULDED PVC
OUTSOLE	: DIRECT INJECTION PVC
LINING	: SYNTHETIC
TOE	: HIGH CARBON STEEL TOE
SIZES	: 4/38 TO 13/47
OPTIONAL	: STEEL MID PLATE / NMT
APPROVAL	: ISI / CE
COLOUR OPTION	: etc.



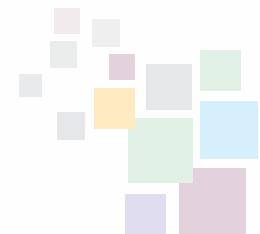
VAULTEX SG 91



CE



TYPE	: KNEE LENGTH
UPPER	: MOULDED PVC
OUTSOLE	: DIRECT INJECTION PVC
LINING	: SYNTHETIC
SIZES	: 4/38 TO 13/47
APPROVAL	: CE
COLOUR OPTION	: etc.



VAULTEX PVC ANKLE BOOT



ISI/CE



TYPE	: MID ANKLE
UPPER	: FULL PVC
OUTSOLE	: MOULDED PVC
LINING	: SYNTHETIC
TOE	: HIGH CARBON STEEL TOE
SIZES	: 4/38 TO 13/47
COLOUR	: BLACK-YELLOW
APPROVAL	: ISI/CE
COLOUR OPTION	: etc.






Vaulttex[®]
Your Safety Is In Safe Hands

EXPORT MODELS

We do **OEM** Supplies also



SGK

CE

S3



TYPE	: MID ANKLE
UPPER	: BUFF DIN (WATER REPELLENT)PRINTED LEATHER
OUTSOLE	: PU DOUBLE DENSITY,ANTISTATIC DIRECT INJECTED
LINING	: PADDED SYNTHETIC
TOE	: ALLOY STEEL, 200 J
SIZES	: 4/38 TO 13/47
COLOUR	: BLACK
OPTIONAL	: COMPOSITE TOE/ MIDSOLE
APPROVAL	: CE

SGB

CE

S3



TYPE	: MID ANKLE
UPPER	: BUFF DIN (WATER REPELLENT)PRINTED LEATHER
OUTSOLE	: PU SINGLE DENSITY, ANTISTATIC DIRECT INJECTED
LINING	: PADDED SYNTHETIC
TOE	: ALLOY STEEL, 200 J
SIZES	: 4/38 TO 13/47
COLOUR	: BLACK
OPTIONAL	: ELECTRICAL
APPROVAL	: CE



JIK

CE



NAIL PROOF



TYPE	: LOW ANKLE
UPPER	: BUFF FULL GRAIN PRINTED LEATHER
OUTSOLE	: PU DIRECTLY MOULDED SINGLE DENSITY
LINING	: PADDED SYNTHETIC
TOE	: ALLOY STEEL
SIZES	: 4/38 TO 13/47
COLOUR	: BLACK
OPTIONAL	: COMPOSITE / ELECTRICAL
APPROVAL	: CE

S13 K

CE



NAIL PROOF



TYPE	: MID ANKLE
UPPER	: BUFF FULL GRAIN PRINTED LEATHER
OUTSOLE	: PU DIRECTLY MOULDED SINGLE DENSITY
LINING	: PADDED SYNTHETIC
TOE	: ALLOY STEEL
SIZES	: 4/38 TO 13/47
COLOUR	: BLACK
OPTIONAL	: ANTISTATIC / ELECTRICAL
APPROVAL	: CE



SKNS

CE



ANTISTATIC



NAIL PROOF



TYPE	: MID ANKLE
UPPER	: BUFF FULL GRAIN PRINTED LEATHER
OUTSOLE	: PU DPUBLE DENSITY, ANTISTATIC DIRECT INJECTED
LINING	: PADDED SYNTHETIC
TOE	: ALLOY STEEL 200 J
SIZES	: 4/38 TO 13/47
COLOUR	: BLACK
OPTIONAL	: COMPOSIT/ELECTRICAL
APPROVAL	: CE

MDJ

CE

300°C

S3



TYPE	: MID ANKLE
UPPER	: BUFF DIN (WATER REPELLENT) PRINTED
OUTSOLE	: PU NITRILE RUBBER, ANTISTATIC DIRECT INJECTED
LINING	: PADDED SYNTHETIC
TOE	: ALLOY STEEL, 200 J
SIZES	: 4/38 TO 13/47
COLOUR	: BLACK
OPTIONAL	: COMPOSITE / ELECTRICAL
APPROVAL	: CE



ZALAT EX

CE

S3



TYPE	: LOW ANKLE, 4 EYELETS
UPPER	: BUFF FULL GRAIN PRINTED LEATHER
OUTSOLE	: PU DIRECTLY MOULDED DOUBLE DENSITY
LINING	: PADDED SYNTHETIC
TOE	: ALLOY STEEL
SIZES	: 4/38 TO 13/47
COLOUR	: BLACK
OPTIONAL	: COMPOSITE TOE/ MIDSOLE
APPROVAL	: CE

ZALAT AK

CE

S3



TYPE	: MID ANKLE
UPPER	: BUFF FULL GRAIN PRINTED LEATHER
OUTSOLE	: PU DIRECTLY MOULDED DOUBLE DENSITY
LINING	: PADDED SYNTHETIC
TOE	: ALLOY STEEL
SIZES	: 4/38 TO 13/47
COLOUR	: BLACK
OPTIONAL	: COMPOSITE TOE/ MIDSOLE
APPROVAL	: CE



LMP

CE



NAIL PROOF



TYPE	: LOW ANKLE
UPPER	: BUFF SUEDE LEATHER
OUTSOLE	: PVC DIRECTLY MOULDING SINGLE DENSITY
LINING	: PADDED SYNTHETIC
TOE	: ALLOY STEEL, 200 J
SIZES	: 4/38 TO 13/47
COLOUR	: BLACK
OPTIONAL	: COMPOSITE / ELECTRICAL
APPROVAL	: CE

VAULTEX KRM

CE



NAIL PROOF



TYPE	: MID ANKLE
UPPER	: BUFF GRAIN LEATHER
OUTSOLE	: PVC DIRECT INJECTION MOULDING
LINING	: PADDED SYNTHETIC
TOE	: 200 JOULE (STEEL)
SIZES	: 4/38 TO 13/47
COLOUR	: BLACK
OPTIONAL	: ANTISTATIC / DOUBLE DENSITY / ELECTRICAL
APPROVAL	: CE



SGT



CE



TYPE	: LOW ANKLE, 4 EYELETS
UPPER	: BUFF OIL PULL UP TAN / BROWN COLOR LEATHER
OUTSOLE	: PU SINGLE DENSITY, ANTISTATIC DIRECT INJECTED
LINING	: PADDED SYNTHETIC
TOE	: ALLOY STEEL, 200 J
SIZES	: 4/38 TO 13/47
COLOUR	: BROWN
OPTIONAL	: ELECTRICAL
APPROVAL	: CE

SGH



CE

S3



TYPE	: MID ANKLE
UPPER	: BUFF DIN (WATER REPELLENT) PRINTED LEATHER
OUTSOLE	: PU SINGLE DENSITY, ANTISTATIC DIRECT INJECTED
LINING	: PADDED SYNTHETIC
TOE	: ALLOY STEEL, 200 J
SIZES	: 4/38 TO 13/47
COLOUR	: BLACK
OPTIONAL	: ELECTRICAL
APPROVAL	: CE



SG-5



CE



NAIL PROOF



TYPE	: SLIP ON
UPPER	: BUFF CORRECTED GRAIN LEATHER
OUTSOLE	: PU DIRECTLY MOULDED SINGLE DENSITY
LINING	: PADDED SYNTHETIC
TOE	: ALLOY STEEL, 200 J
SIZES	: 4/38 TO 13/47
COLOUR	: BLACK
OPTIONAL	: ANTISTATIC / ELECTRICAL
APPROVAL	: CE

SGM



CE



TYPE	: LOW ANKLE, 4 EYELETS
UPPER	: BUFF DIN (WATER REPELLENT) PRINTED LEATHER
OUTSOLE	: PU DOUBLE DENSITY, ANTISTATIC DIRECT INJECTED
LINING	: PADDED SYNTHETIC
TOE	: ALLOY STEEL, 200 J
SIZES	: 4/38 TO 13/47
COLOUR	: BLACK
OPTIONAL	: ELECTRICAL
APPROVAL	: CE



SGE

CE

S3



TYPE	: LOW ANKLE, 4 EYELETS
UPPER	: BUFF DIN (WATER REPELLENT) PRINTED LEATHER
OUTSOLE	: PU SINGLE DENSITY, ANTISTATIC DIRECT INJECTED
LINING	: PADDED SYNTHETIC
TOE	: ALLOY STEEL, 200 J
SIZES	: 4/38 TO 13/47
COLOUR	: BLACK
OPTIONAL	: ELECTRICAL
APPROVAL	: CE

SGO

CE

S3



TYPE	: MID ANKLE
UPPER	: BUFF DIN (WATER REPELLENT) PRINTED LEATHER
OUTSOLE	: PU SINGLE DENSITY, ANTISTATIC DIRECT INJECTED
LINING	: PADDED SYNTHETIC
TOE	: ALLOY STEEL, 200 J
SIZES	: 4/38 TO 13/47
COLOUR	: BLACK
OPTIONAL	: ELECTRICAL
APPROVAL	: CE



SGN



CE

S3



TYPE	: MID ANKLE
UPPER	: BUFF FULL GRAIN PRINTED LEATHER
OUTSOLE	: PU DIRECTLY MOULDED SINGLE DENSITY
LINING	: PADDED SYNTHETIC
TOE	: COMPOSITE TOE-200J
SIZES	: 4/38 TO 13/47
COLOUR	: BLACK
OPTIONAL	: ANTISTATIC / ELECTRICAL
APPROVAL	: CE

* ANTI PERFORATION MIDSOLE

SG-6



CE



NAIL PROOF



TYPE	: LOW ANKLE, 4 EYELETS
UPPER	: BUFF FULL GRAIN PRINTED LEATHER
OUTSOLE	: PU DIRECTLY MOULDED SINGLE DENSITY
LINING	: PADDED SYNTHETIC
TOE	: ALLOY STEEL
SIZES	: 4/38 TO 13/47
COLOUR	: BLACK
OPTIONAL	: ANTISTATIC / ELECTRICAL
APPROVAL	: CE



VAULTEX PURE

CE



NAIL PROOF



TYPE	: LOW ANKLE
UPPER	: BUFF SUEDE LEATHER
OUTSOLE	: PVC DIRECTLY MOULDED SINGLE DENSITY
LINING	: PADDED SYNTHETIC
TOE	: ALLOY STEEL, 200 J
SIZES	: 4/38 TO 13/47
COLOUR	: HONEY
OPTIONAL	: COMPOSITE / ELECTRICAL
APPROVAL	: CE

VAULTEX RIGGER

CE



NAIL PROOF



TYPE	: KNEE LENGTH
UPPER	: BUFF GRAIN LEATHER
OUTSOLE	: PVC DIRECT INJECTION MOULDING
LINING	: PADDED SYNTHETIC
TOE	: 200 JOULE (STEEL)
SIZES	: 3/37 TO 13/47
COLOUR	: BLACK
OPTIONAL	: ANTISTATIC / ELECTRICAL
APPROVAL	: CE



MILLER EX.

CE



NAIL PROOF



TYPE	: LOW ANKLE, 4 EYELETS
UPPER	: BUFF FULL GRAIN PRINTED LEATHER
OUTSOLE	: PU DIRECTLY MOULDED SINGLE DENSITY
LINING	: PADDED SYNTHETIC
TOE	: ALLOY STEEL
SIZES	: 4/38 TO 13/47
COLOUR	: BLACK
OPTIONAL	: ANTISTATIC / ELECTRICAL
APPROVAL	: CE

MILLER AK.

CE



NAIL PROOF



TYPE	: MID ANKLE
UPPER	: BUFF FULL GRAIN PRINTED LEATHER
OUTSOLE	: PU DIRECTLY MOULDED SINGLE DENSITY
LINING	: PADDED SYNTHETIC
TOE	: ALLOY STEEL
SIZES	: 4/38 TO 13/47
COLOUR	: BLACK
OPTIONAL	: ANTISTATIC / ELECTRICAL
APPROVAL	: CE



Vaultex[®]

Your Safety Is In Safe Hands





SG Exports

Factory: D-1, D-195, 196 & 197 EPIP Site-V, Kasna,
Greater Noida -201306 U.P (INDIA)
Email : sgexport@yahoo.com www.vaultex.in

